



Looking through the Five Safes Lens – Sensitive Data Sharing Arrangements and Research Workflows

Dr Steven McEachern & Ingrid Mason
The Australian National University
steven.mceachern@anu.edu.au, ingrid.mason@anu.edu.au

ABSTRACT / INTRODUCTION

The [CADRE \(Coordinated Access for Data, Research and Environments\) Platform project](#) is a co-investment of nine organisations ranging from research intensive universities, federal government research organisations, and national research infrastructure providers. The central aim in developing the CADRE Platform is to expedite researcher access to sensitive data, by augmenting existing authentication and authorisation infrastructure services and establishing shared request management and decision-support services.

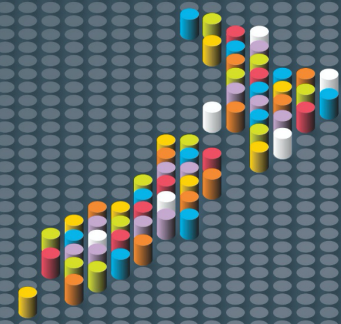
The CADRE project has used the Five Safes framework as a lens to understand and translate researcher, data owner and custodian, and service provider infrastructure requirements. The framework has been used conceptually to enable dialogue and establish a common information model that is designed to work across social boundaries and anticipates different types of protocols (technical, informational, social and cultural); and sensitive data sharing arrangements and research workflows that run across multiple systems through interoperation and complex collaborations.

The presentation will provide an overview of the Five Safes implementation framework developed by the CADRE team, along with a demonstration of the application of the framework to data managed by the Australian Data Archive (ADA). Several examples of cross-jurisdictional, cross-sectoral and cross-community data sharing arrangements that have served as use cases shaping the CADRE information model and driving the development of the CADRE Information Exchange will be referenced. These inter-institutional data sharing arrangements are the foundation for making sensitive data accessible for research through the Australian Data Archive:

1. *Ten to Men – Longitudinal Study on Male Health* (Australian Institute of Family Studies) [DOI: 10.26193/JDE1TD](https://doi.org/10.26193/JDE1TD)
2. *National Drug Strategy Household Survey* (Australian Institute of Health and Welfare) [DOI: 10.26193/WRHDJL](https://doi.org/10.26193/WRHDJL)
3. *Survey of the Bangladeshi People* (Asia Foundation) [DOI: 10.26193/D1SRMZ](https://doi.org/10.26193/D1SRMZ)
4. *Footprints in Time – Longitudinal Study of Indigenous Children* (National Centre for Longitudinal Data, Department of Social Services) [DOI: 10.26193/ICEBFP](https://doi.org/10.26193/ICEBFP)

eResearch NZ 2022

9-11 FEBRUARY, CHRISTCHURCH & ONLINE



ACKNOWLEDGEMENTS

CADRE Partners

- The Australian National University
- The Australian Access Federation
- The Research Graph Foundation
- Australian Institute of Health and Welfare
- Australian Institute of Family Studies
- AARNet
- Australian Research Data Commons
- University of Melbourne (SOCEY)
- UNSW (ERICA, Centre for Big Data Research in Health)
- Swinburne University (Social Data Analytics Lab)

Partner co-investment in the CADRE platform project is \$3.9M. The CADRE Platform project received \$1.9M investment (<https://doi.org/10.47486/PL106>) from the [Australian Research Data Commons](#) (ARDC). The ARDC is funded by the [National Collaborative Research Infrastructure Strategy](#) (NCRIS).

REFERENCES

Australian Data Archive, <https://ada.edu.au/>, accessed 20/10/2021

CADRE Platform Project, <https://cadre5safes.org.au/>, accessed 20/10/2021

Office of the National Data Commissioner, Australian Government (2019), *Best Practice Guide to Applying Data Sharing Principles*, 15 March 2019, <https://www.datacommissioner.gov.au/sites/default/files/2019-08/data-sharing-principles-best-practice-guide-15-mar-2019.pdf>, accessed 20/10/2021

ABOUT THE AUTHOR(S)

Dr Steven McEachern is the Director of the Australian Data Archive and CADRE project lead (ANU). <https://orcid.org/0000-0001-7848-4912>

Ingrid Mason is the CADRE project and technical manager (ANU). <https://orcid.org/0000-0002-0658-6095>